

RETHINKING EDUCATION!



Prospectus



THE NEW NORMAL!

The world changes a little bit with every generation. As conscious educators, we observe these subtle evolutions in children and consider it to be our duty to lead them in the right direction. Towards 'the new normal'.

The new normal, where education isn't limited to syllabus or four walls of a classroom, but is earned through life experiences and curiosity.

It's where we nurture the young ones' mind and soul, so they grow up to be successful, sensible and sensitive beings.

The new normal is where a child follows his heart in life and not the herd.

Never before have these words meant so much. Today, it is more than just adapting to our changing realities. It's about the capability to look at uncertainties as new possibilities. And that's exactly why we are here for your child – to prepare them for every new normal in their life and teach them to embrace it with love, fervour and optimism.



ABOUT US

ADDING AN EDGE TO KNOWLEDGE

Founded in 1994 by the Shri Krishna Education Trust with the support of BEML, Bengaluru; Shishya BEML Public school strives to bring world-class education to the classrooms in India. The trust was established in 1991 by Dr. Gopal Saxena and Ms. Deepa Saxena with the purpose of providing high-quality education and contributing towards comprehensive growth of future generations.

Located in a safe neighbourhood, the school building boasts of a large playground for sports and extracurricular activities. The campus features well-equipped facilities like laboratory, library, audio-visual rooms, art studio and state-of-the-art classrooms with smart boards.



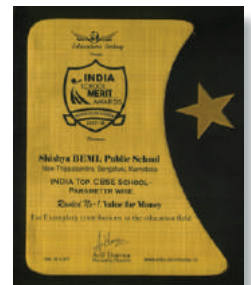
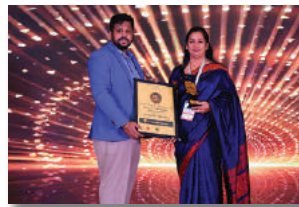
The school received CBSE affiliation up to Class 10 in the year 2000, and for the 10+2 syllabus in 2012. It is committed to providing the students with the best in education to meet ever-evolving needs of the fast-changing world. The emphasis, therefore, is not only on students' academic progress, but also on their literary and cultural interests. It ensures a conducive learning environment for every child by maintaining playfulness, discipline and values on its vibrant campus.

Ranked among the top 25 schools in Karnataka, the school has been relentlessly educating its children to be responsible leaders of tomorrow. The spectacular success of its students and alumni is proof!

OUR HIGHEST ACCOLADES

Consistency is the true mark of excellence!

It's not just our students who have to pass tests. For their sake, we do too. And through hard work and dedicated effort, we have aced ours.



Shishya BEML Public School feels honoured to be recognised by the India's School Ranking Survey* (December 2019 edition) for its excellence in various aspects of education such as:

Competence of faculty



Community service



Academic reputations



Special needs education



Sports and co-curricular education



Individual attention to students



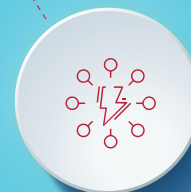
Internationalism



Life skills and conflict management



Infra provision



Leadership management quality



Parental involvement





CHAIRMAN'S MESSAGE DR. GOPAL SAXENA

REDEFINING EDUCATION

As responsible educators, we are conscious of the need to provide our children with the knowledge and skills required to succeed not only in today's society, but in a society that would exist 20 or more years into the future. Given the fast pace at which the world is changing, it is likely that today's pre-schoolers would graduate into a world where vehicles would drive themselves, factories would operate intelligently, and machines would possess human-like capabilities through advanced artificial intelligence. There may even be human habitations on the Moon and Mars.

Another important development in the modern society is the information overload a child is subjected to right from birth. This introduces an important challenge to childhood educators. It is not enough to give information to the child – there is enough of it available online – but to teach the child how to ask the right questions, identify true knowledge, filter out the noise and use that information to their advantage.

At Shishya, with our 26 years of experience, we recognise these emerging trends and are equipped with the right tools to address them effectively. For us 'Redefining Education' is not just an empty slogan but an ongoing objective. We not only provide best-in-class infrastructure and facilities but also 21st century teaching methodologies. More importantly, we ensure that our teachers are highly qualified and trained in their field of expertise, especially in early childhood education.

We are committed to making our children future-ready and I invite parents to share and benefit from our vision for their child.



A NOTE FROM THE HEADMISTRESS MRS. GOLDY SHARMA

It is rightly said that “Education is simply the soul of a society as it passes from one generation to another”.

Every day at The Shishya School, a team of warm and dedicated teachers ensures that pupils enter their classrooms with enthusiasm and confidence. Our teachers are not only proficient leaders in their respective field, but also passionate individuals who truly love their work.

We welcome and encourage honest and positive communication with parents as they are equally our partners in educating their children. Our students are groomed from a very early age to foster respect for diversity which prepares them for a complex and ever-changing world. We strongly believe in the importance of parents, teachers and administrators working in unison, thereby ensuring happy and fruitful growing-up years for our students. For this, our school community has provided all the facilities that efficiently enable the functioning of the school in each and every sphere.

On behalf of my entire team, I gladly welcome your interest in our school as your preferred choice for your child’s bright future.

OUR PHILOSOPHY

**THE COMPASS
FOR OUR JOURNEY**



Vision

To develop future-ready global youth who will enhance society through their scholastic achievements; possess the drive to excel as well as compassion and understanding of the complex and uncertain world around them.

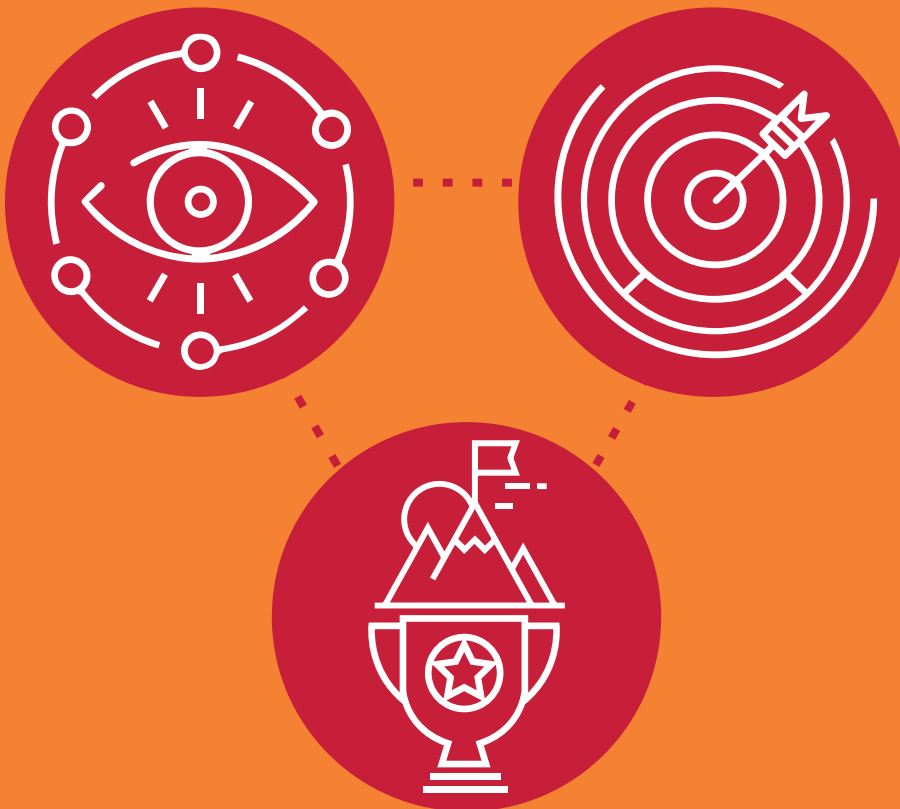
Mision

To develop students who will:

- Achieve the highest academic standards
- Grow up to be analytical and critical thinkers
- Become compassionate and sensitive leaders

Through

- A safe and nurturing school environment that supports and encourages life-long learning
- Teachers who are professionally proficient and passionate educators



Motto

Excellence is our virtue.

OUR SCHOOL

EDUCATING BEYOND BOUNDARIES

At The Shishya School, education is far beyond progress cards, grades and degrees; for these things don't do justice to the depth and reach of it. It's more about the kind of person your child will be turning into, than about the kind of student he is today.

After all, education is not limited to the mere information available in books and syllabi. It has a widespread impact on our society, culture and interpersonal relationships today as well as tomorrow.

We share your dream of shaping a future generation that not only possesses a strong and refined intellect but also wisdom and values.



SCHOOL TIMINGS

**Nursery to
Prep II**

Monday to Friday
(9:00 am to 12:30 pm)

**Grade I
to XII**

Monday to Friday - 8:30 am to 3:10 pm
Saturday – 8:30 am to 12:30 pm

Holiday

Nursery to Grade IV - Saturday and Sunday
Grade V to XII – 2nd and 4th
Saturday and Sunday

LEARNING AT SHISHYA

PEDAGOGY: INFUSING WISDOM INTO KNOWLEDGE

An efficient pedagogy is a harmonious relationship between teachers, students and their learning environment. At Shishya, we teach to learn all about your child, while continuously learning, through our interactions, how to teach them in the most effective way. We ensure that education is not only about imparting knowledge, but also about receiving it and being able to put it into action.

We combine established learning theories with innovative teaching practices and programmes to achieve the right blend of consistency and variety in our teaching methods. Our teaching strategies such as direct instructions, collaborative learning and inquiry-based learning help us improve their learning outcomes and achieve their full potential.

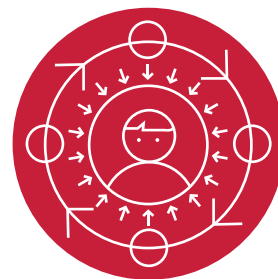


Centred around your child

Our outcome-centric teaching methodology needs us to reassess the progress students make after a specific learning activity. It helps us identify the gap between their existing learning condition and their desired learning state, while also providing us with the right direction to plan our learning activities to close that gap.

The delivery mechanisms followed for school curricula are learner-centric in order to make measurable impact on students' lives. Some of the learning outcomes we aim for are:

- Proficiency in subjects like English, Math and Science according to benchmarks set by national standards
- The ability to think critically and analytically
- Familiarity with technology
- Development of 21st century skills such as collaboration, leadership skills, personal and social responsibility, etc.





LEARNING SPACES

Creating the right environment for bright possibilities



Age-appropriate classroom settings:

Designed to cater to the specific needs of students of all ages, our classrooms reflect a sense of warmth and security. Whether they are in kindergarten, primary school, middle school or high school, we ensure a comfortable environment that supports learning and growth.



Library:

The school has a well-stocked library that includes educative periodicals, journals, magazines, newsletters, fiction, reference books and encyclopaedia. The library also offers integrated learning programmes that include phonics for pre-primary levels and literary classics for older students.



Laboratory:

Knowledge gained from books also needs to be experienced for new concepts and ideas to come to life. Our school labs are set up as per the requirements of the CBSE board for Physics, Chemistry and Biology. Each laboratory is well-equipped, so that students can experiment and truly comprehend textbooks. The school also has well-resourced Computer lab, Math lab and Innovation lab that offer easy access to the latest in the field of technology, including multimedia content.



Sporting facilities:

Physical fitness plays a significant role in a child's learning process. A healthy body helps a child focus better and stay attentive in classrooms. Which is why, we also pay attention to what happens outside the classrooms. As a result, there is both – space and provision for all kinds of sport, as well as indoor games. The school features expansive playgrounds as well as a well-constructed sporting area ideal for a variety of games.

SKILL-BASED ASSESSMENTS

Evaluating strengths to empower minds



ASSET:

ASSET – Assessment of Scholastic Skills through Educational Testing, is a scientifically designed test that measures students' understanding of skills and concepts related to their syllabi. It is conducted once every year across grades 4 to 8 in English, Math and Science using multiple-choice questions. The assessment helps discover the strengths and weaknesses of every student, and in turn helps us with actionable insights. It sets a benchmark for the school at an international as well as regional level and inspires us to do better by outperforming ourselves every year.

The sole objective behind this evaluation exercise is to encourage meaningful learning instead of rote-learning.



The Olympiad:

The Olympiad is an excellent opportunity for students with an avid interest in Math, Science, English and Cyber studies. Conducted by Science Olympiad Foundation, this championship offers a global platform to high school students around the world.

It is held in a different country each year, whereas participants are drawn from 5 continents and more than 100 countries. Although more of a competition than an assessment, The Olympiad truly prepares students for the world outside their comfort zone.



KEY EDUCATORS

Illuminating the way to a brighter future!



Teachers at school:

At Shishya, a teacher's role goes far beyond the classroom. In their conscious effort to share knowledge with students, they also ensure to extend life skills and strong values that will last them a lifetime. As compassionate and wise individuals, they understand that the same teaching methods don't apply to every student. Hence, they happily fulfil their responsibility of making each child feel secure and stay curious.

Finding a good mentor for impressionable minds is a duty that we take very seriously. Which is why, each teacher is carefully selected after a rigorous selection process that includes tests, interviews and demo classes. Further more, they are specially trained through a series of training programmes conducted by the CBSE Board. These programmes provide solutions to matters related to curricula, content and technology; it develops individual teaching styles and helps teachers to assess themselves using feedback from students, colleagues and the management.



Parents as our partners:

Outside classrooms, parents are our best teaching partners. After all, a child is always learning even when they are not at school. At Shishya, we create a comfortable and transparent environment for parents, so they can play an active role in their child's learning process. We regularly organize open house sessions, non-academic events and activities so they have more opportunities to experience their child's world at school.



RADICAL LEARNING

LAYING THE FOUNDATION FOR TRUE GROWTH

Never confined to classrooms, never limited to textbooks and never bound by time. When it comes to education, we believe it should be an all-encompassing yet seamless process. We use every possible interaction with your child as an opportunity to groom them into great human beings.



The core curriculum

Our core curriculum provides students with the knowledge required by the traditional Indian education system. We go a step further to ensure a genuine engagement with taught subjects by using simple but effective teaching methods.

Innovative lesson plans based on well-researched material



Engaging activities and worksheets



Regular assessments and formal certification

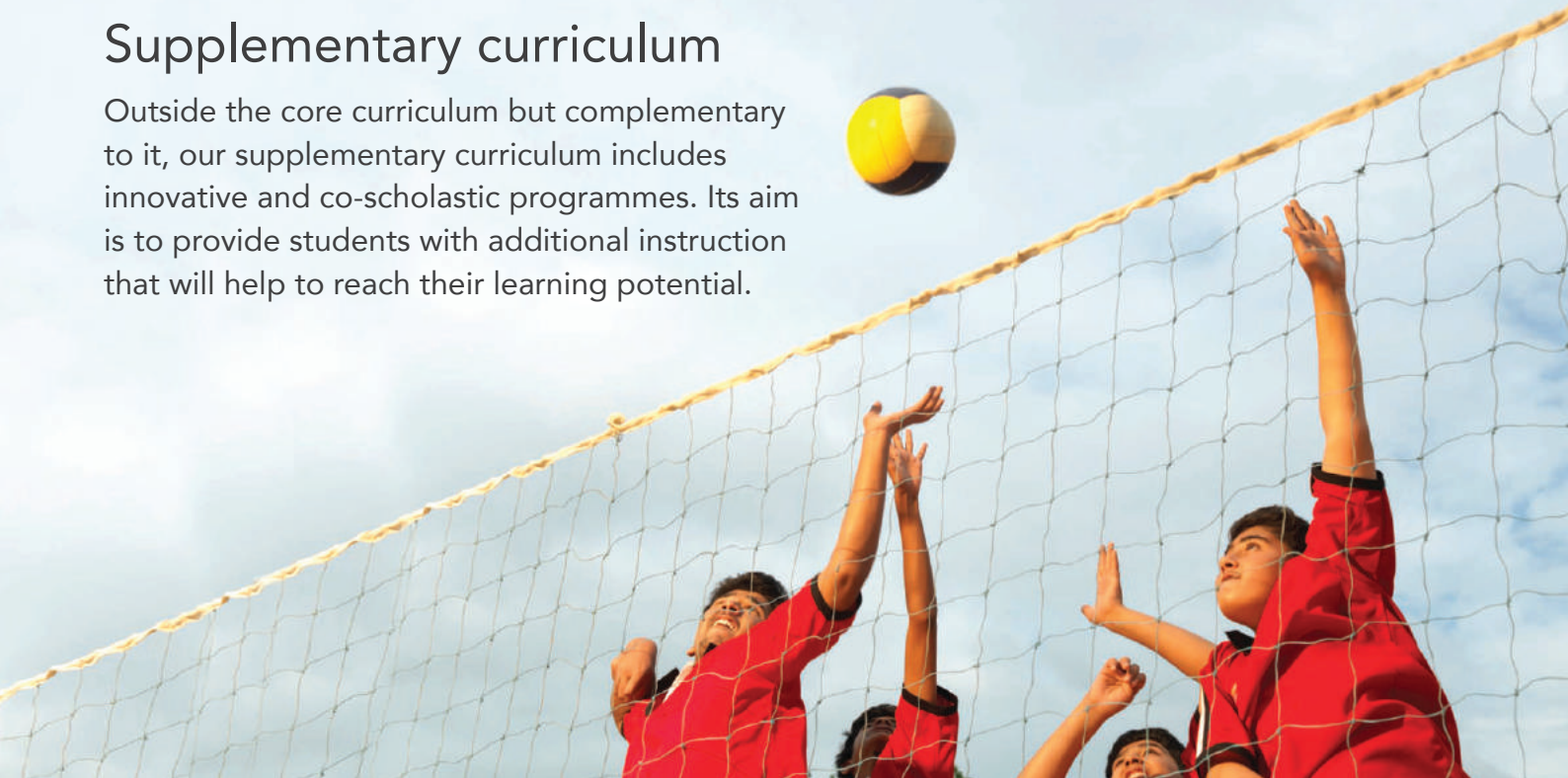


Remedial tutorials when necessary



Supplementary curriculum

Outside the core curriculum but complementary to it, our supplementary curriculum includes innovative and co-scholastic programmes. Its aim is to provide students with additional instruction that will help to reach their learning potential.



Structured Physical Education:

The school follows a structured curriculum prescribed by the NASPE (National Association of Sports and Physical Education) to identify students possessing athletic potential with the help of professionals. In addition, students follow a year-round sports and physical education programme under trained and qualified instructors and participate in inter/intra-school activities.



Middle School Mathematics Programme:

Math Practice is a programme designed to improve students' conceptual understanding of Math through commonly available everyday material. The hands-on involvement during the programme encourages divergent and lateral thinking in them.



Reading Books Campaign:

During the academic year, children are encouraged to read books from different genres and review them using worksheets. The Reading Books Campaign is designed to motivate students to read outside their syllabus and boost creative thought process in them.



Grammar Express:

Grammar Programme uses a natural learning process to improve grammar skills. It comprises worksheets, exercises, speech activities, listening, reading and conversation to help students master the English language.



Science Experimentation and Application:

Yardstick Science Experiment Programme is a highly interactive and experiential learning initiative for inquisitive minds. It focuses on real-life application and understanding of core concepts and skills, rather than memorizing them.



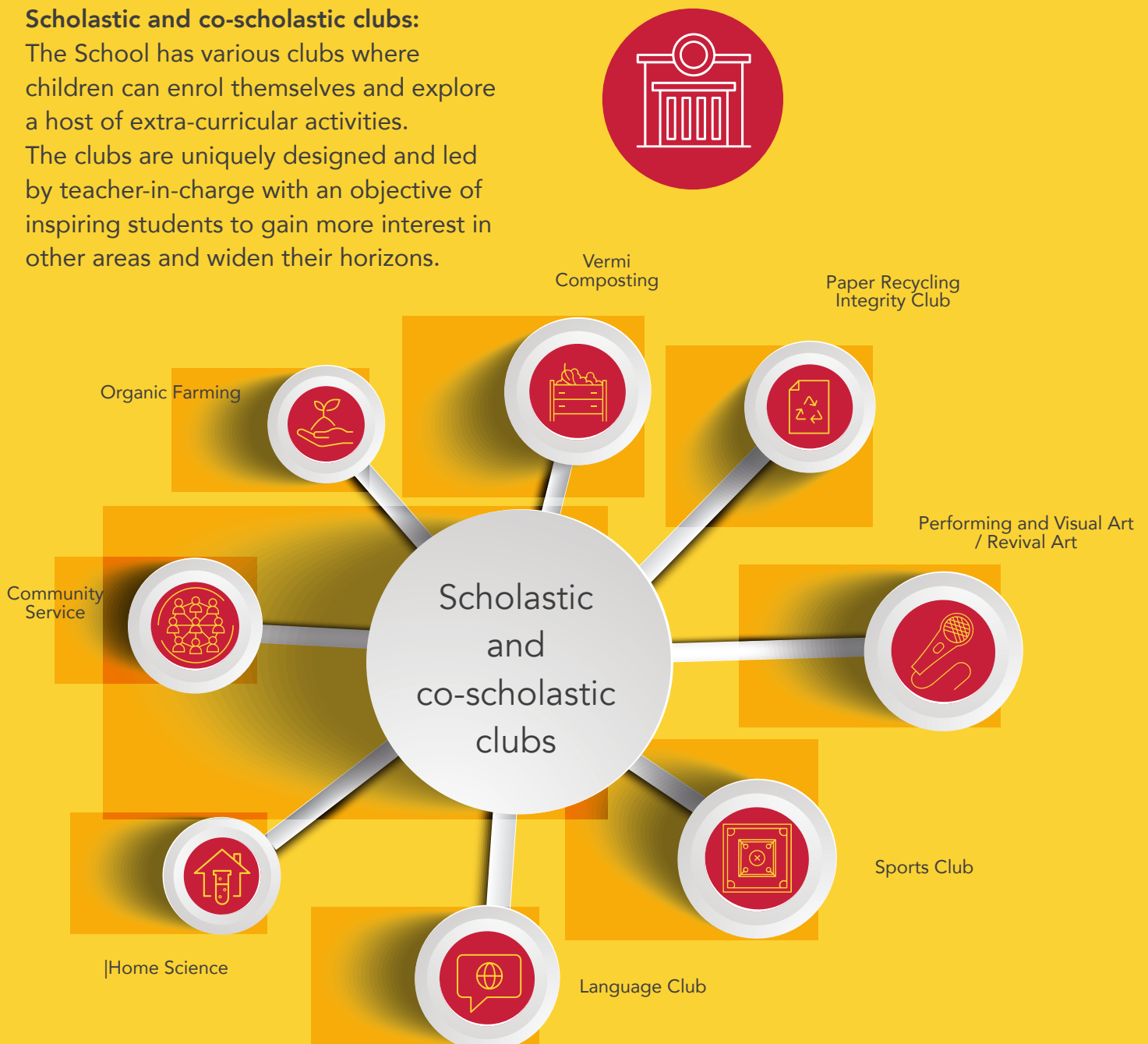
Value-added curriculum

In addition to the core and supplementary curricula, the school attempts further contribution towards learning outcomes through its value-added curriculum. The curriculum includes a set of innovative programmes for our students' academic, cultural and co-scholastic progress.



Scholastic and co-scholastic clubs:

The School has various clubs where children can enrol themselves and explore a host of extra-curricular activities. The clubs are uniquely designed and led by teacher-in-charge with an objective of inspiring students to gain more interest in other areas and widen their horizons.





Learning Improvement Programme:

This programme is aimed at improving the teaching and learning processes to regularly elevate the performance of students in board examinations. It focuses on five major subjects and topics that impact Grade X and XII performance. Remediation is provided on the concept level of important subjects in Grade VI, VII & VIII; thereby strengthening the basics right from middle school.



Board Preparation (Grade X & XII)

The school works incessantly to set students up for spectacular success in their Grade X and XII board examinations. Exam-related support is given in the form of question paper pattern, chapter-wise mark allocation, previous years' question papers with answers and more. Tips on how to answer the paper are shared. Common errors made by students in examinations are pointed out and suggestions to rectify them are discussed. Counselling to manage exam stress is also provided.



Experiential Performing Arts Programme:

School offers training in contemporary dance, western jazz and tap dances, as well as Indian dance forms, based on student requirements. Similarly, children have access to music classes where they are taught by experts in that field.

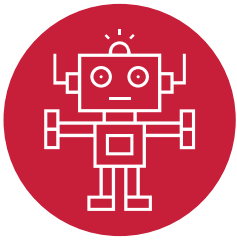


SPIC MACAY

A non-profit, voluntary movement to promote Indian classical music and culture, SPIC MACAY endeavours to assist the exchange of traditional values, familiarise children with cultural heritage, and to draw cultural and aesthetic awareness into mainstream education. SPIC MACAY is currently present in over 1,000 academic institutions, holding at least 2,000 events a year in 150 Indian cities and 50 cities abroad.

21 st century skills

The school emphasizes on preparing students to succeed in the career of their choice by helping them gain the right exposure and necessary skills.



Robotics Lab:

Students are taught how to design, construct and manoeuvre a robot at the Robotics Lab. It helps improve their cognitive skills and deepen their understanding of fundamental math and science concepts. This also enhances our students' prototyping skills and empowers them to put their ideas into working projects.



Career Guidance/Awareness:

Students are provided with accurate and up-to-date information and guidance about career opportunities, chances to study abroad and competitive exams, so that they can make the right choice when it comes to life after school.

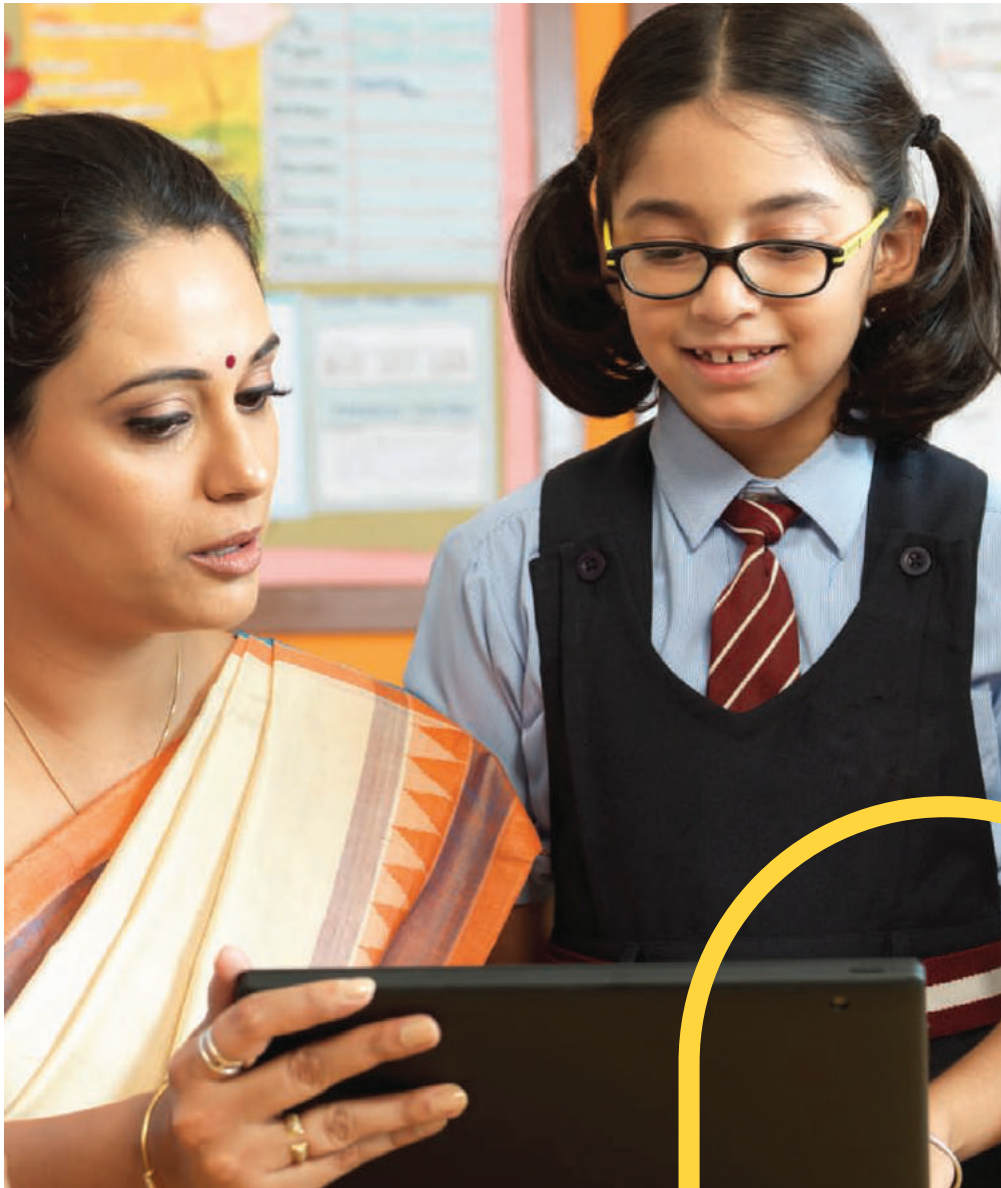


In-class digital facilities

Digital solutions at Shishya aid our teaching processes to ensure effective learning in the classroom. Each classroom is equipped with smartboards fuelled with relevant digital content. The fully-integrated learning ecosystem takes students beyond the realm of textbooks and blackboards to provide better understanding of topics.

MyLyceeParent / Student App:

Learning becomes even more expansive when it goes beyond all the possible boundaries. HomeApp, our digital learning tool, ensures that the lessons taught in school can be accessed from home as well. It lets you view and access e-books and all in-class digital videos anytime, anywhere. Students can also take up assignments and extra needs allocated by the teacher as well as attempt practice questions for every chapter and receive immediate results on completion. What's more, you can work on it without constant need of the internet.



Innovative learning practices

The school facilitates learning beyond the prescribed curriculum with the help of simple yet smart techniques.



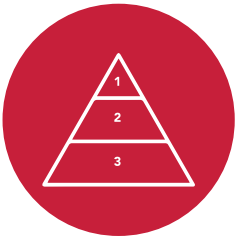
Group activities:

Group activities help children develop their communication ability and improve their interpersonal relationships. Collaborative learning techniques are used to teach them team-building skills so they become adept in organisation, delegation, negotiation, teamwork, cooperation and leadership.



Field trips:

We schedule many field trips in an academic year which greatly influence the learning process. The trips help deepen a student's interest in a topic with a practical and relevant experience.



Class pyramid:

Students who have shown merit in academics, co-curricular activities or social conduct, are given a place in a 'class pyramid'. It essentially depicts the collective efforts and achievements of a class, and inspires students to work harder through healthy competition.



Circle time:

Circle Time is a social activity that encourages informal yet meaningful discussions in class, allowing students to exchange thoughts and learn from one another. The circle formation in which they sit ensures that each student can see all the other members of their class. We believe that it raises their self-worth while encouraging them to be more open and trusting.



Champ of the week:

Champ of the Week is an activity that we use to build our students' self-confidence. Apart from creating healthy self-esteem, it also facilitates a strong home-school partnership.



HEALTH AND SAFETY

A secure childhood leads to a successful adulthood!

After home, school is where children spend a considerable amount of their time.

Exactly why, we feel committed to creating child-friendly and comfortable spaces for their comprehensive growth and wellbeing.

Guided by our uncompromising commitment to build and emphasize a secure learning culture at school, we have adopted the global standards of safety and child protection. Our caring and compassionate ethos ensures that our students feel nurtured and protected at all times.



Safety on campus

- CCTV enabled campus with record monitoring system
- On-campus safety drill – Fire safety and earthquake drills to prepare for eventualities with an emergency response plan
- Evacuation plan displayed in all classrooms
- Trained fire wardens to fight fire and assist children in evacuation
- First aid and immediate response drills
- Trained first aiders to help unwell/injured children
- Security sentry at all gates and on all floors
- No unsupervised interaction between children and visitors within school campus
- Parents / visitor entry restricted to the office area
- Children's movement outside classrooms monitored by teachers and on-campus staff
- 'Fire Exit' signs to 'Emergency Assembly Area' displayed in all corridors



Safety on the school bus

- Buses fitted with specified speed governors
- Fire extinguishers and first aid kits present on every bus
- Children monitored by trained female attendants
- Installation of CCTV cameras in every bus
- Provision on GPS tracking and SMS updates to parents
- Optimum number of children on every bus



Child protection

- A committee comprising of the Principal and two senior teachers to regularly monitor the health and safety of students
- Helping them make the right choice when it comes to life after school through guidance and counselling
- A suggestion / complaint box to regularly address the concerns of students



Monitoring and guidance

- Periodic multi-layered audits
- Alerts and newsletters
- Stakeholders sensitization and engagement



Identity cards

- All children and parents issued with a school ID Card
- Parents to show ID card to enter school and collect their child from school / bus drop points for Grades I to V
- School ID Card to be worn by all school staff while at school
- ID cards valid for one academic year only



Health and safety during COVID-19

While the ongoing coronavirus pandemic has upturned the world and the vaccine for the same appears farther than the horizon, the school has taken up following initiatives to ensure good health and safety of our students:

- Regular fumigation/ sanitization of all key areas at school
- Thermal thermometers and hand sanitizer units at all entry and exit points
- Abiding by social distancing guidelines and strictly enforcing the mask mandate
- Regular cleaning and sanitization of our sump tanks as well as overhead tanks
- Multiple awareness sessions on COVID prevention for our students, staff, parents and stakeholders on the guidelines given by CBSE, Center and State education and HRD department
- Counselling sessions for students to ensure their mental and emotional wellbeing
- Making Aarogya Setu app mandatory for staff members, parents and visitors
- Maintaining visitor's checklist at entry and exit points



EVENTS AND ACTIVITIES

A secure childhood leads to a successful adulthood!

We, at The Shishya School, understand the importance of coming together for various events and activities. It not only enriches a child's world, but also creates new possibilities for learning through active exchange of thoughts and ideas.



Tirangaa

Tirangaa is an annual inter-school event that allows children from all schools to exhibit their literary, artistic and musical talents. As the name suggests, the event mainly revolves around themes that address topics of national significance.

It gives children an insight into Indian culture and helps them learn about our culture and society.

Parent orientation programmes

Our Parent Orientation Programmes aim to connect teachers with parents of the children about to join pre-primary, primary, middle school and high school. These programmes offer a unique

opportunity to parents to acquainted with the academic year ahead. They include explanations about examination patterns, extra-curricular activities, required parental support for the functioning of the school and more.

TESTIMONIALS

My journey in Shihya BEML Public School shall remain etched in my memory forever. It has played a vital role in enhancing my leadership skills which eventually helped me become the school captain.

At SBPS, one can benefit from a great combination of academics and co-curricular activities along with excellent teachers, well-equipped classrooms, warm atmosphere and extremely friendly and helpful staff.

A 'Thank You' doesn't adequately express my gratitude for SBPS which has shaped me into the person I am today. Proud to be a 'Shishyite'!

Shivanshu Basumallick
- Alumnus



Having teachers to encourage me at all times was an important factor behind my success. I learnt to take up responsibilities and become more expressive after joining this Shishya BEML Public School. Overall, I had a wonderful experience in this school. Thank you!

Abhay Aaditya
- Student / House captain

Shishya BEML Public School has impressed us parents because they encourage holistic learning at school. The approach, attitude and commitment of the leadership and staff is commendable. My son was offered many opportunities and challenges that he enjoyed. In the process, we have seen him learn, grow and mature into a fine 12th grader. He passed out of 12th in 2019 with 97% in the CBSE board exam and secured a rank of 2121 in JEE Advanced, and went on to join Computer Science Engineering at IIT Mandi, HP. We thank the school for their efforts that contributed towards his success. I have recommended SBPS to all my friends.

Mrs. Rajani Thota
- Parent





I have a lot of good things to say about Shishya BEML Public School. It is not an ordinary school. The School has provided a safe and comfortable environment for our children to learn and grow. The curriculum encourages individual as well as team learning experiences, allowing children to develop skills in the areas that are critical in further education and work environment. Teachers at the school personally know their students and they take focused effort towards each student's needs. Shishya BEML Public School provides a high-quality education in a friendly environment, thus successfully preparing students for their future, growth and development. Moreover, my daughter feels as safe and comfortable at the school as she does at home.

Mr. R. Anantha Raman
- Parent

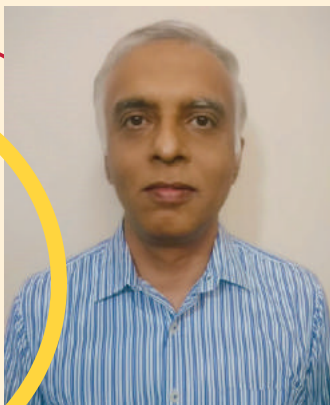
'A good education is the foundation for a better future.'

- Elizabeth Warren

We have been associated with Shishya BEML Public school from the past 8 years since 2012, when my daughter entered her nursery class.

The school has built and continues to strengthen an excellent foundation for my child's intellectual, emotional, social and physical development. I have seen my child blossom into a confident individual with multiple talents. The school has a great team of friendly and dedicated educators who create a nurturing environment for learning. It has undergone many positive changes and grown from strength to strength, year after year. Kudos to the school management and teachers for their tireless efforts in shaping my child's future. I am sure the school will continue its pursuit of excellence.

Mrs. Sampada Seth
- Parent



I would like to personally appreciate the management, Principal and teachers of Shishya BEML Public School for providing the highest standard in education at reasonable costs to the citizens of Malleshpalya and surrounding areas. Another point to note is that the quality of education imparted by the school has improved in spite of the increase in student enrolment. I sincerely believe that the institution will continue to offer quality education that is accessible and affordable to a large majority of people. Wishing the institution all the best.

Mr. Sesa Narayan
- Parent



ADMISSION CRITERIA

Eligibility:

- Age limit for nursery is 2 years and 8 months as on June 1st of the year of admission
- Age limit for Grade I is 5 years and 8 months as on June 1st of the year of admission

How to apply to the school:

1. Register on the school website – www.shishyabemlschool.edu.in
2. Visit the school to get a registration form.
3. Submit the filled form along with the documents as mentioned below:
 - i. Filled-up registration form
 - ii. Copy of birth certificate
 - iii. Copy of Aadhar card
 - iv. Transfer certificate (If applicable)
 - v. Progress sheet of the last examination taken
 - vi. 4 passport-sized photographs of the child
 - vii. 2 passport-sized photographs of parents / guardian

Disclaimer:

- Subscription to prospectus may not guarantee the rights of admission
- The school fully reserves the right of admission and its decision in the matter is final and binding, and cannot be questioned.
- The school reserves the right to change its admission procedure from time to time without notice.



SHISHYA

SHISHYA BEML PUBLIC SCHOOL

BEML Township, New Tippasandra Post, Bangalore 560075. Call: 6452000 / 25247242
Email: pra@shishyabemlschool.com | www.shishyabemlschool.edu.in